

4.2.1: Library is automated using Integrated Library Management System (ILMS):

The library is using the Integrate Library management system (ILMS) called NewGenLib software version 3.2.1. New Gen Lib has functionalities that enable a library to manage its housekeeping operations viz., acquisition of books and other materials, creation and maintenance of its catalogue database, circulation of its holdings, etc. In addition, however, NewGenLib allows a library to define its own network of libraries. One library in the network called the Host library installs the software on its public-domain server and then configures other libraries as Associate libraries on its network.

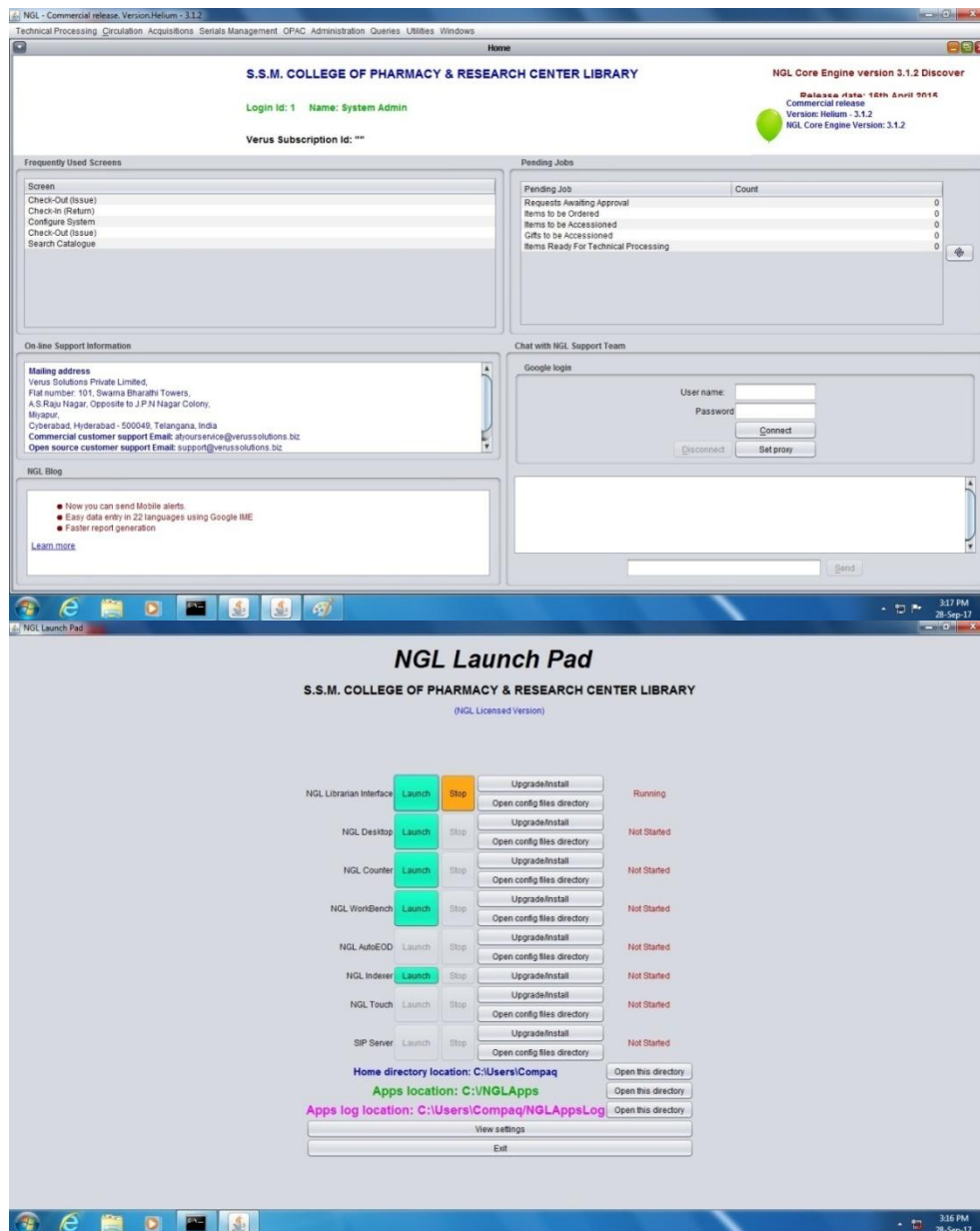


Figure 1 ILSM Screen shot